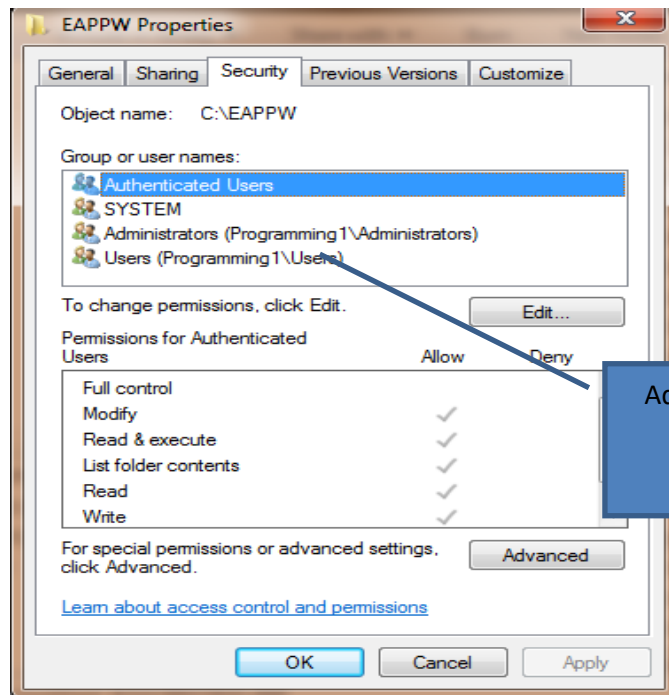
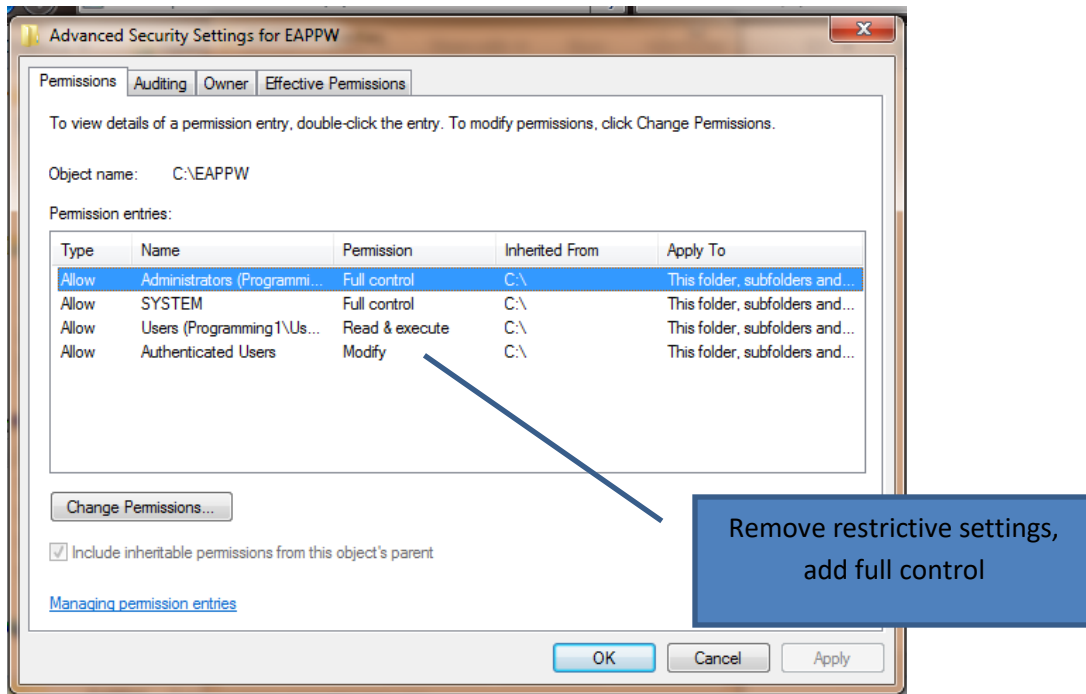


## Setting ASI products with UAC, UNC, and non-administrative accounts

1. Set full permissions on the shared product folder on the server. I.e.: c:\eappw
  - a. On the Security tab in Properties for the product folder click the Edit Button
  - b. Click Add button
  - c. Type in user group name or EVERYONE
  - d. Click OK
  - e. In the Permissions for Authenticated Users put a checkmark in the FULL Control ALLOW column.
  - f. Click OK

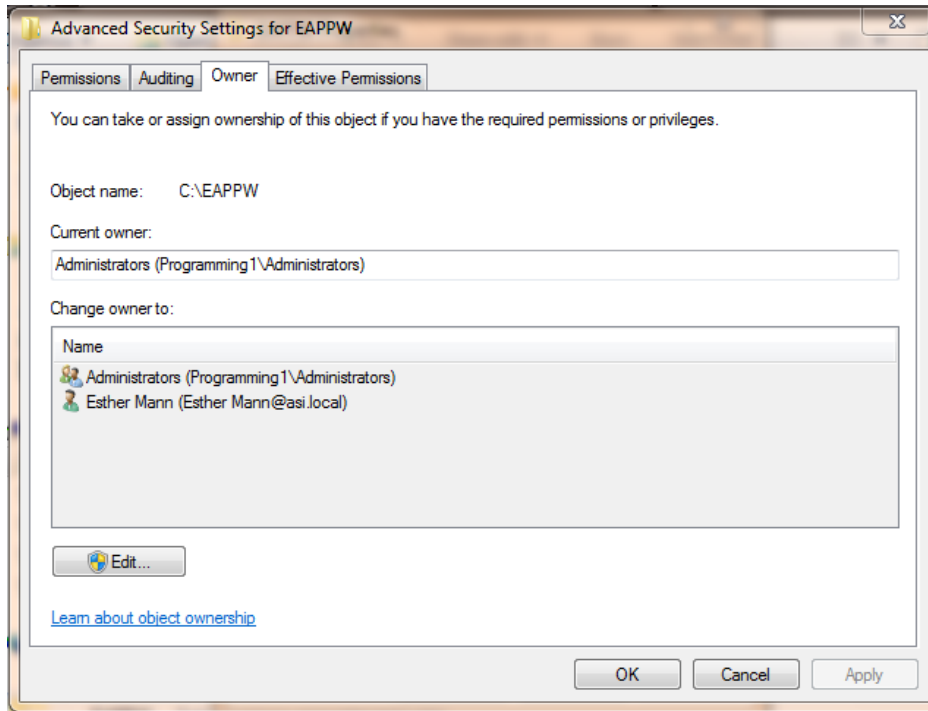


2. Click the Advanced button. On the Permissions Tab check that all permissions are FULL Control



NOTE: if any of the permissions are *NOT* FULL Control, the users group assigned those permissions will be limited to the most restrictive permissions not granted the most expansive rights.

3. Click on the OWNER tab



4. Change the OWNER to the users group or to the EVERYONE group.
5. Apply the change to the subfolders as well.

6. Right click on Setupws.exe in the program folder and select Run as Administrator. Click through the prompts until the setup is complete.
7. At every workstation: Set the folder permissions and OWNERSHIP (steps 2-5) on
  - a. C:\Program Files\Common Files\Borland Shared OR
  - b. C:\Program Files (x86)\Borland (for a 64bit machine)
8. If the workstations are running with UAC on and a user account with restricted permissions, the path to the program must be through a UNC path and not a mapped network drive.
  - a. CORRECT for running without Linked Connections Enabled:  
<\\myservermachine\myAppsFolder\Eappw>
  - b. INCORRECT for running without Linked Connections Enabled: f:\eappw\
9. Check the BDE make sure the NET DIR path using the following steps
  - a. Go to START/PROGRAMS/AGENCYPRO FOR WINDOWS/BDE CONFIG
  - b. Click on the Configuration Tab at the top
  - c. Click the plus sign to the left of Configuration if there is one
  - d. Click the plus sign to the left of Drivers
  - e. Click the plus sign to the left of Native
  - f. Click on the word Paradox
  - g. On the right side of the screen the Net Dir should say  
<\\myservermachine\myAppsFolder\Eappw> This field has to be the same on every machine or you'll get that directory is controlled by another .net file. If you manually change this field on any machines, after you make the change click in another field, just so you leave the one you made the change in before closing with the X and it should ask if you want to save the changes and click yes.

NOTE: On Windows 7, Windows 8 and Windows 10 opening BDE Config normally will show one version of the Borland Database Engine. If you right click and Open as Administrator, you may find different settings, so make sure those are set correctly too. There can also be a Program Files or Program Files (x86) folder in User\%UserProfile%\AppData\Local\Virtual Store. If there is a Borland folder there, rename it , so it's not being used.
10. Full Access to the User\%UserProfile%\AppData\Local\TMPAPRO (or TMPEZ(A)) folder
11. Full Access to the HKEY\_LOCAL\_MACHINE\SOFTWARE\AGENCYSOFTWARE, INC registry key and all descending keys.
12. Full Access to the HKEY\_CURRENT\_USER\SOFTWARE\Agency Software, Inc registry key and all descending keys.

13. Full Access to all BORLAND keys in the registry (key B if the machine is 64bit)
- a. HKEY\_LOCAL\_MACHINE\SOFTWARE\Borland
  - b. HKEY\_LOCAL\_MACHINE\SOFTWARE\WOW6432Node\Borland

